

MONTHLY MEMBERSHIP PROGRESS REPORT

LOCATION PRINCE EDWARD ISLAND

District N 1

Results as of: 6/30/2023

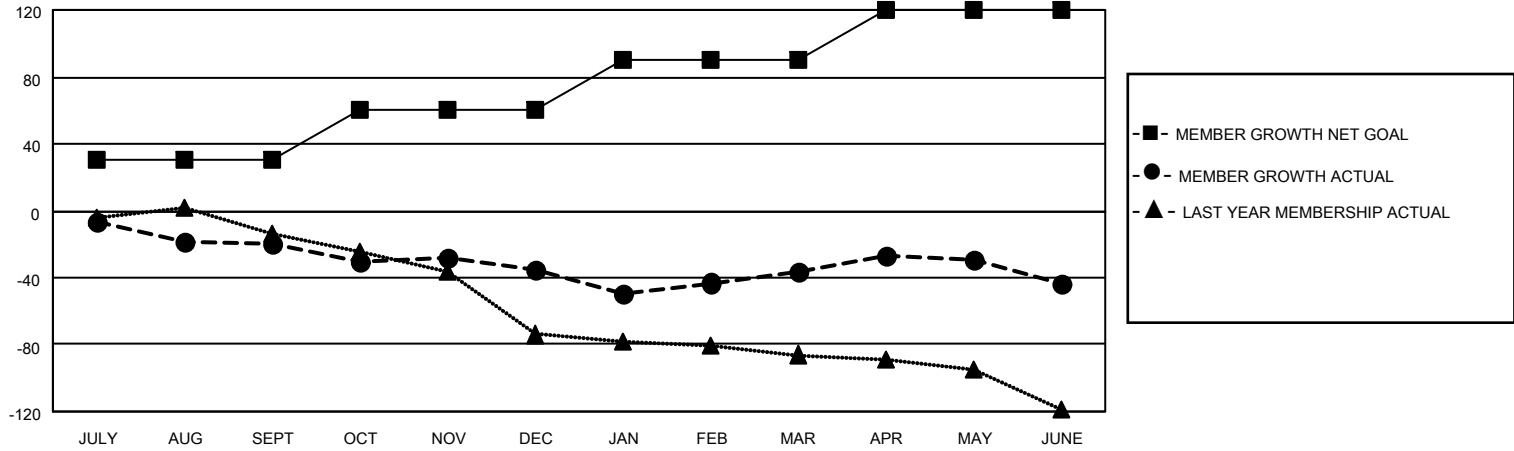
Clubs			
RESULTS FOR 2022-2023			
QUARTER	NEW CLUB GOAL	NEW CLUBS	DROPPED CLUBS
JULY/AUG/SEPT	0	0	1
OCT/NOV/DEC	0	0	0
JAN/FEB/MAR	0	0	0
APR/MAY/JUNE	1	0	3

Members			
RESULTS FOR 2022-2023			
QUARTER	MEMBER GROWTH NET GOAL	MEMBER GROWTH ACTUAL	DROPPED MEMBERS ACTUAL (including transfers)
JULY/AUG/SEPT	30	11	27
OCT/NOV/DEC	30	28	43
JAN/FEB/MAR	30	57	53
APR/MAY/JUNE	30	56	58

GOALS AND ACTUAL NEW CLUBS CUMULATIVE



GOALS AND ACTUAL MEMBERS CUMULATIVE



DROPPED CLUBS: 4	
<u>DROPPED MEMBERS</u>	
DECEASED	27
CLUB CANCELLED	10
OTHER	144
TOTAL	181

43 CLUBS OF 78 ADDED 1 OR MORE NEW MEMBERS

[CLICK HERE FOR CUMULATIVE MEMBERSHIP DATA](#)

<u>GENDER DISTRIBUTION</u>	
MALE	1,115 (71.47%)
FEMALE	444 (28.46%)
NON BINARY	0 (0.00%)
PREFER NOT TO ANSWER	1 (0.06%)
TOTAL FAMILY UNIT MEMBERS	274
FAMILY MEMBERS PAYING HALF DUES	139